



MARIAN COLLEGE KUTTIKKANAM
(AUTONOMOUS)

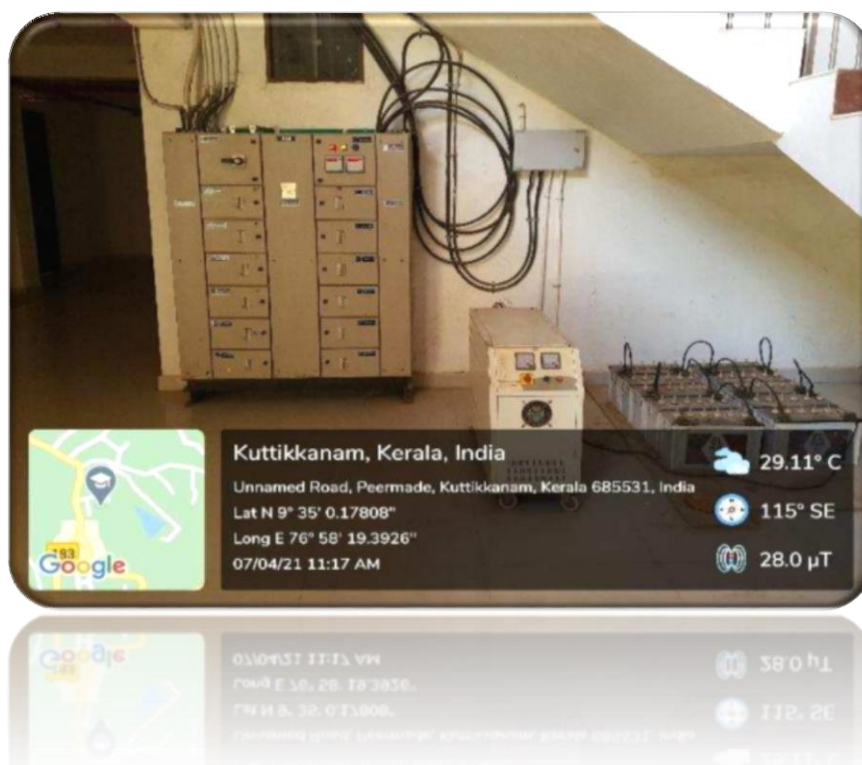
Wheeling to the Grid

Submitted to

THE NATIONAL ASSESSMENT AND ACCREDITATION COUNCIL (NAAC)
FOURTH CYCLE OF ASSESSMENT

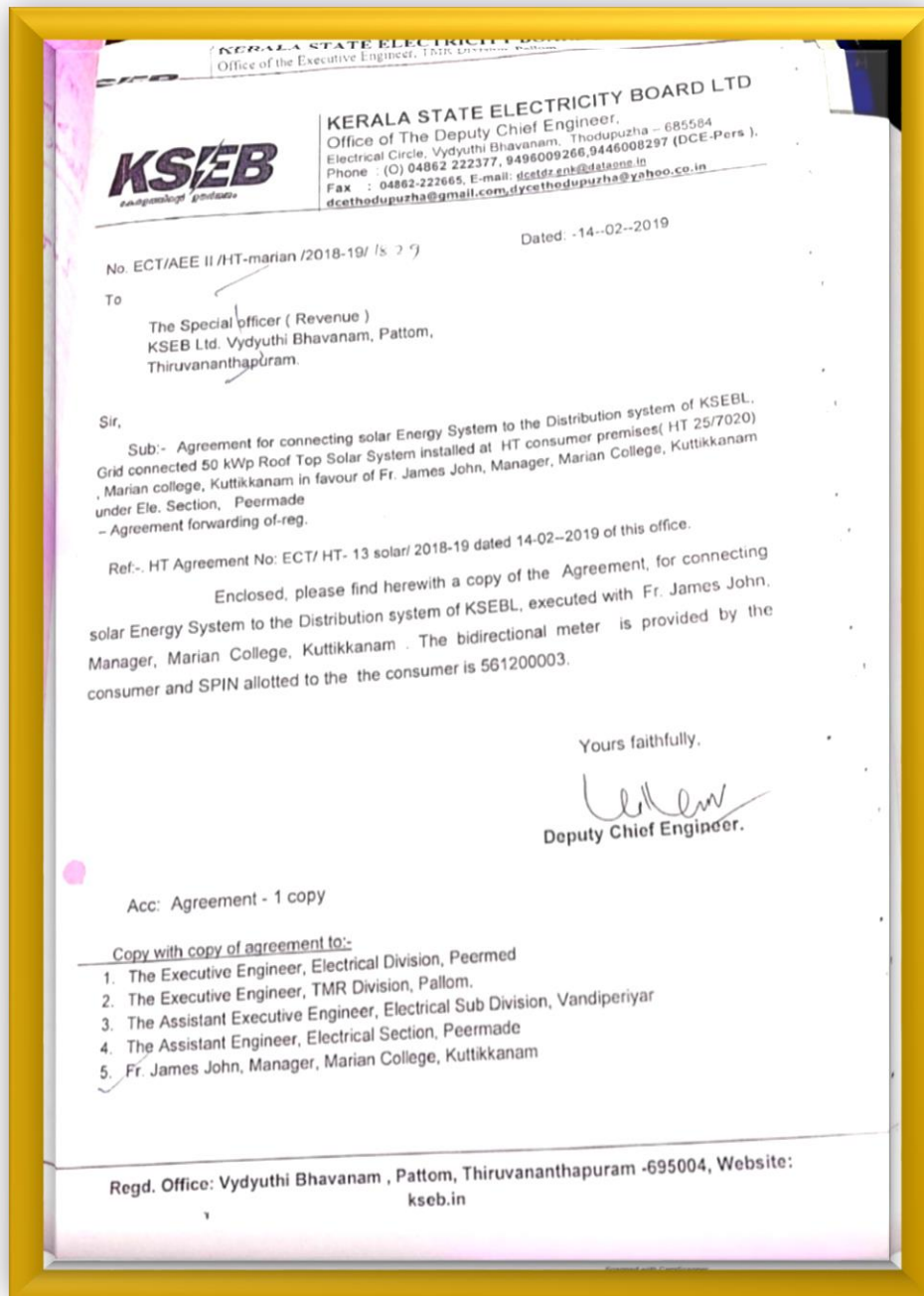
7.1.2.3 Wheeling to the Grid

Excess solar energy generated by rooftop solar modules are given to the KSEB grid. The system includes safety and power quality components such as switches to disconnect the system from the grid in the event of a power failure. The power conditioning equipment ensures that the power exactly matches the voltage and frequency of the electricity flowing through the grid. The 80 KWP solar panels installed on Marian initiative reduced the consumption of energy on campus considerably. This endeavour was greatly appreciated by the KSEB as a promotion of sustainable energy.



Electric grid connections of Solar Photovoltaic (SPV) installation





Agreement with Kerala State Electricity Board for wheeling to the grid





Letter of appreciation from Kerala State Electricity Board for the initiative to promote sustainable energy and its wheeling to grid.

